

TACAN KRT
Chan 125

APCH CRS
247°

Rwy Idg
THRE 9843
Arpt Elev 686
729

[USAF] AL-2625 (RTAF)

KHORAT AB (VTUN)

★ When ALS inop, increase CAT ABCDE vis to 3600m.

ALS F-1
A1

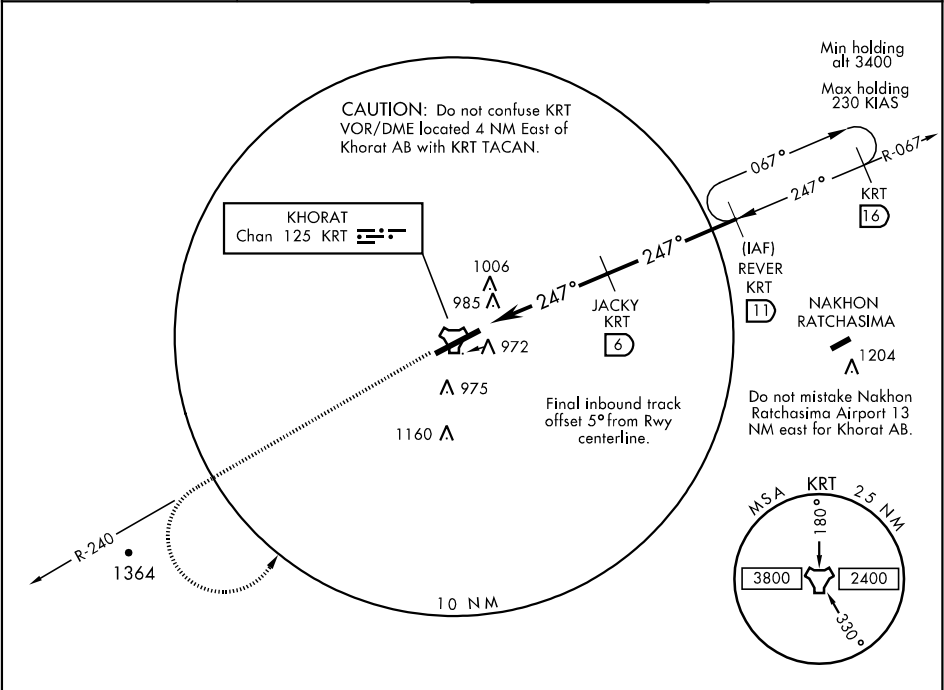
MISSED APPROACH: Climb on track 247° direct to KRT TACAN, then turn left, climb on R-240 to 4000 within 1.5 DME, then turn left direct to REVER and hold.

ATIS ★
390.6

KHORAT APP CON
129.75 285.0

KHORAT TOWER
122.2 240.5

GND CON
121.75 257.8



EMERG SAFE ALT 100 NM 7000

HAT derived from THRE.

Tr 247°
KRT
4000
KRT R-240
REVER Within 1.5

TLv FL130
TA 11,000

ELEV 729

TACAN
2.9
1.8
3.1 NM
JACKY 6
2300 (1614)
REVER R-067 11
3400 (2714)

247° to TACAN
THRE 686
9843 x 145
0.5% DOWN
A1
P

CATEGORY	A	B	C	D	E
S-TAC 24 *	1320-2800m 634 (600-2800m)				
CIRCLING	1360-3600m 631 (700-3600m)	1580-4000m 851 (900-4000m)	1580-4400m 851 (900-4400m)	1680-4800m 951 (1000-4800m)	

HIRL Rwy 06-24

Effective 3 AUG 2006 - 31 AUG 2006