

# HALIFAX THREE DEPARTURE (VECTOR) (CYHZ3)

06047

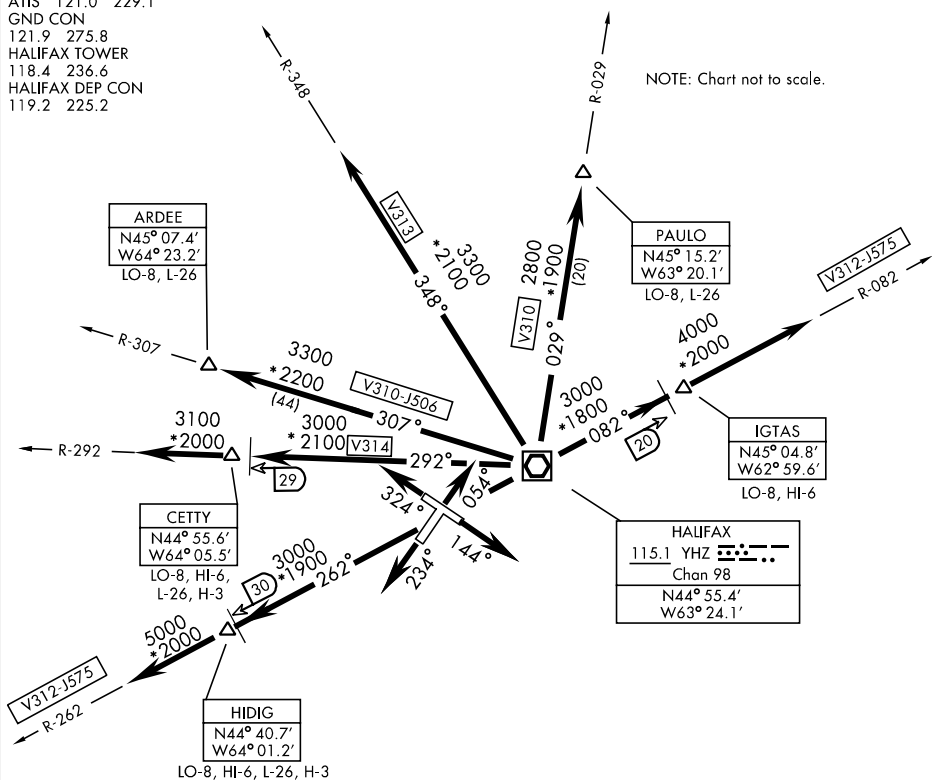
[USAF] SHL-2363 (TC)

HALIFAX INTL (CYHZ)

HALIFAX, NS, CANADA

ATIS 121.0 229.1  
GND CON  
121.9 275.8  
HALIFAX TOWER  
118.4 236.6  
HALIFAX DEP CON  
119.2 225.2

NOTE: Chart not to scale.



## DEPARTURE ROUTE DESCRIPTION

TAKE-OFF ALL RWYS: Climb on runway heading for RADAR vectors. Maintain 5000.

### COMMUNICATION FAILURE-TRANSPONDER MODE A/3 CODE 7600

On recognition of communication failure 10 minutes or less after take-off and in IFR weather conditions proceed as follows:

1. Upon reaching last assigned altitude proceed directly on course.
2. Maintain last assigned altitude for 10 minutes after take-off.
3. Climb to flight planned altitude.

NOTE: If communication failure occurs more than 10 minutes after take-off, comply with the appropriate procedure for communication failure enroute.

HALIFAX THREE DEPARTURE  
(VECTOR) (CYHZ3)

HALIFAX, NS, CANADA

HALIFAX INTL (CYHZ)

Effective 3 AUG 2006 - 31 AUG 2006