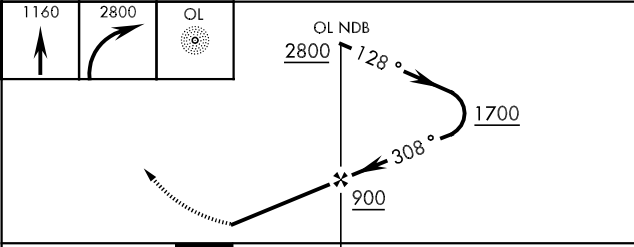
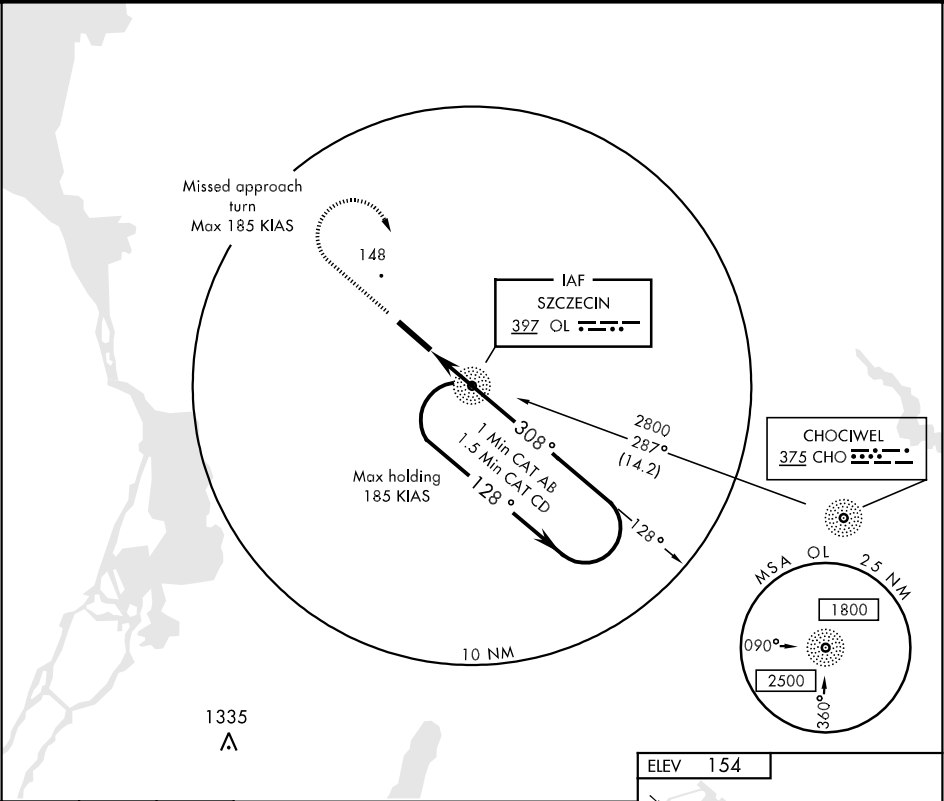


NDB OL 397	APCH CRS 308°	Rwy Idg TDZE Arpt Elev 8202 154 154	[USA] AL-3054 (PL)	GOLENIOW (EPSC)
* When ALS inop, increase vis CAT ABC to 1600m, CAT D to 2000m.		ALSF-1 	MISSED APPROACH: Climb straight ahead to 1160 then climbing right turn to 2800 direct OL NDB. Expect further instructions from ATC.	

SZCZECIN TOWER
118.5



CATEGORY	A	B	C	D
S-31 *	540-800m 386 (400-800m)		540-1200m 386 (400-1200m)	
CIRCLING	580-1600m 426 (500-1600m)	660-1600m 506 (600-1600m)	760-2800m 606 (700-2800m)	860-3600m 706 (800-3600m)

