

06159

## KAMPO1G, NVS1G DEPARTURE

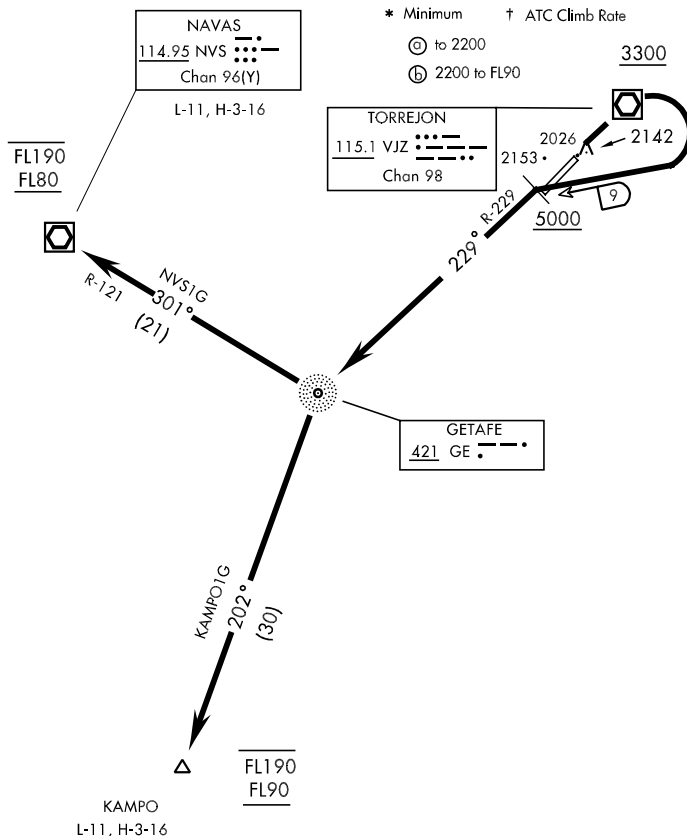
[USN] SHL-2712 (SP)

TORREJON

MADRID, SPAIN

GND CON  
118.3 375.0  
TORREJON TOWER  
122.1 257.8  
MADRID APP CON  
118.4

| Rwy      | Knots    | 60  | 120 | 180 | 240  | 300  | 360  |
|----------|----------|-----|-----|-----|------|------|------|
| * 05 (A) | V/V(fpm) | 290 | 580 | 870 | 1160 | 1450 | 1740 |
| † 05 (B) | V/V(fpm) | 280 | 560 | 840 | 1120 | 1400 | 1680 |



## DEPARTURE ROUTE DESCRIPTION

**TAKE-OFF RWY 05:** Climb direct to cross VJZ VOR/DME at or above 3300. Turn right (Max Turn for CAT ABC 185 KIAS) to follow VJZ R-229 direct to GE NDB. Cross VJZ 9 DME at or above 5000. Thence...

**KAMPO ONE GOLF DEPARTURE (KAMPO1G):** Turn left and follow GE NDB bearing 202° direct to cross KAMPO between FL90 and FL190.

**NAVAS ONE GOLF DEPARTURE (NVS1G):** Turn right to follow NVS VOR/DME R-121 direct to cross NVS between FL80 and FL190.

KAMPO1G, NVS1G DEPARTURE

MADRID, SPAIN

TORREJON

Effective 3 AUG 2006 - 31 AUG 2006