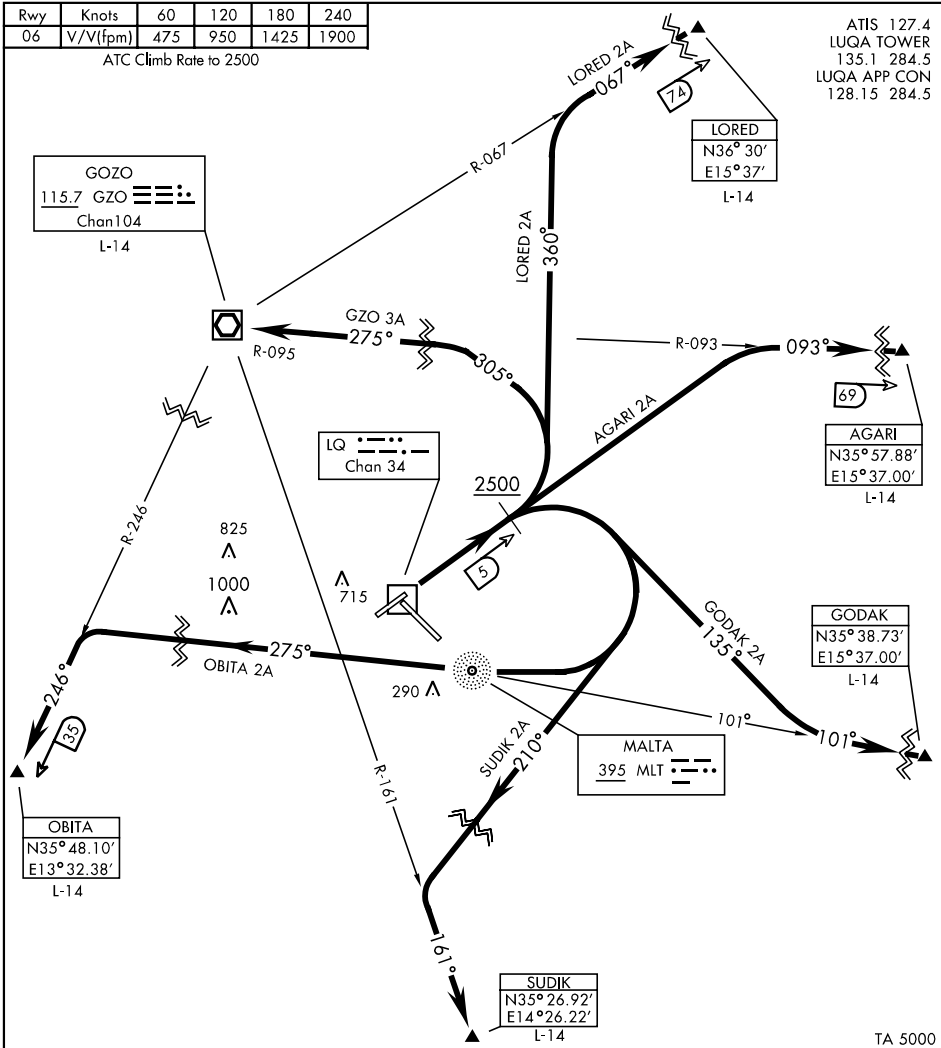


Rwy	Knots	60	120	180	240
06	V/V(fpm)	475	950	1425	1900

ATC Climb Rate to 2500



DEPARTURE ROUTE DESCRIPTION

TAKE-OFF RWY 06: Climb rwy heading to 5000. Cross LQ 5 DME at or above 2500. AT LQ 5 DME. . .

AGARI 2A: . . .maintain heading intercept GZO R-093 inbound to AGARI.

GODAK 2A: . . .turn right to make a track of 135°. Intercept MLT bearing 101° inbound to GODAK.

GZO 3A: . . .turn left to make a track of 305°. Intercept GZO R-095 inbound to GZO VOR.

LORED 2A: . . .turn left make a track of 360°. Intercept GZO R-067 inbound to LORED.

OBITA 2A: . . .turn right inbound to MLT NDB. Then make a track of 275°. Intercept GZO R-246 inbound to OBITA.

SUDIK 2A: . . .turn right to make a track of 210°. Intercept GZO R-161 inbound to SUDIK.