

LOC/DME ILE
109.9
Chan **36**

APCH CRS
060°

Rwy Idg **13,123**
THRE **1158**
Arpt Elev **1234**

[USAF] AL-2903 (LU)

LUXEMBOURG (ELLX)

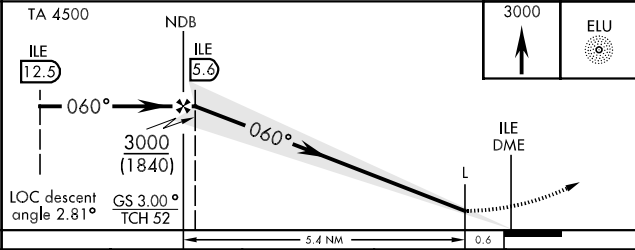
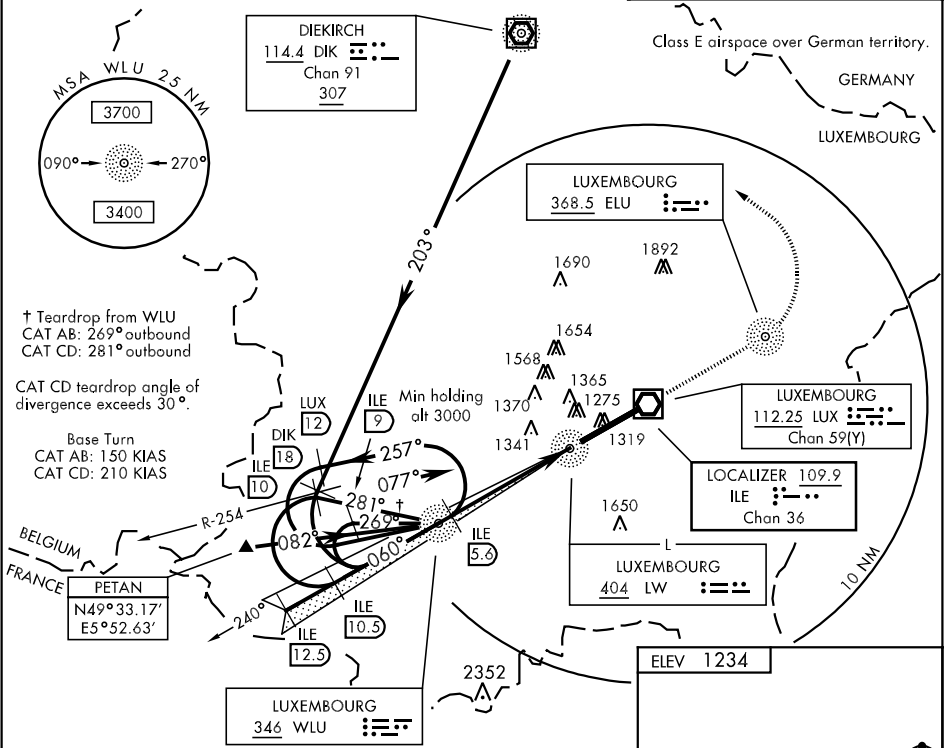
✚

* When ALS inop, increase RVR to 1220m, vis to 1200m.
** When ALS inop, increase RVR to 1520m, vis to 1600m.

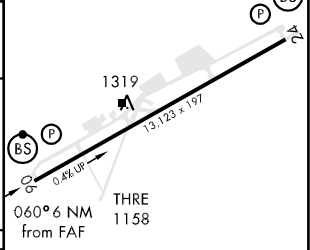
BS

MISSED APPROACH: Climb to 3000 straight ahead to ELU NDB, turn left to DIK climbing to 4000. Max 250 KIAS.

ATIS 126.3	LUXEMBOURG APP CON 118.9	LUXEMBOURG TOWER 118.1
----------------------	------------------------------------	----------------------------------



CATEGORY	A	B	C	D
S-ILS 06 *	1358/730m 200 (200-800m)			
S-LOC 06 **	1440/730m 282 (300-800m)		1440/1220m 282 (300-1200m)	
CIRCLING	NOT AUTHORIZED			



HIRL Rwy 06-24 TDZL/CL Rwy 24					
FAF to MAP 5.4 NM					
Knots	60	90	120	150	180
Min:Sec	5:24	3:36	2:42	2:10	1:48