

REYKJAVIK (BIRK)

## RWY 01-RE1, SU1, KEF1, SA1A, RH1A, PA1 DEPARTURE

REYKJAVIK, ICELAND

ATIS ★ 128.1  
GND CON  
121.7  
REYKJAVIK TOWER  
118.0 292.7  
REYJAVIK APP/DEP CON  
119.0

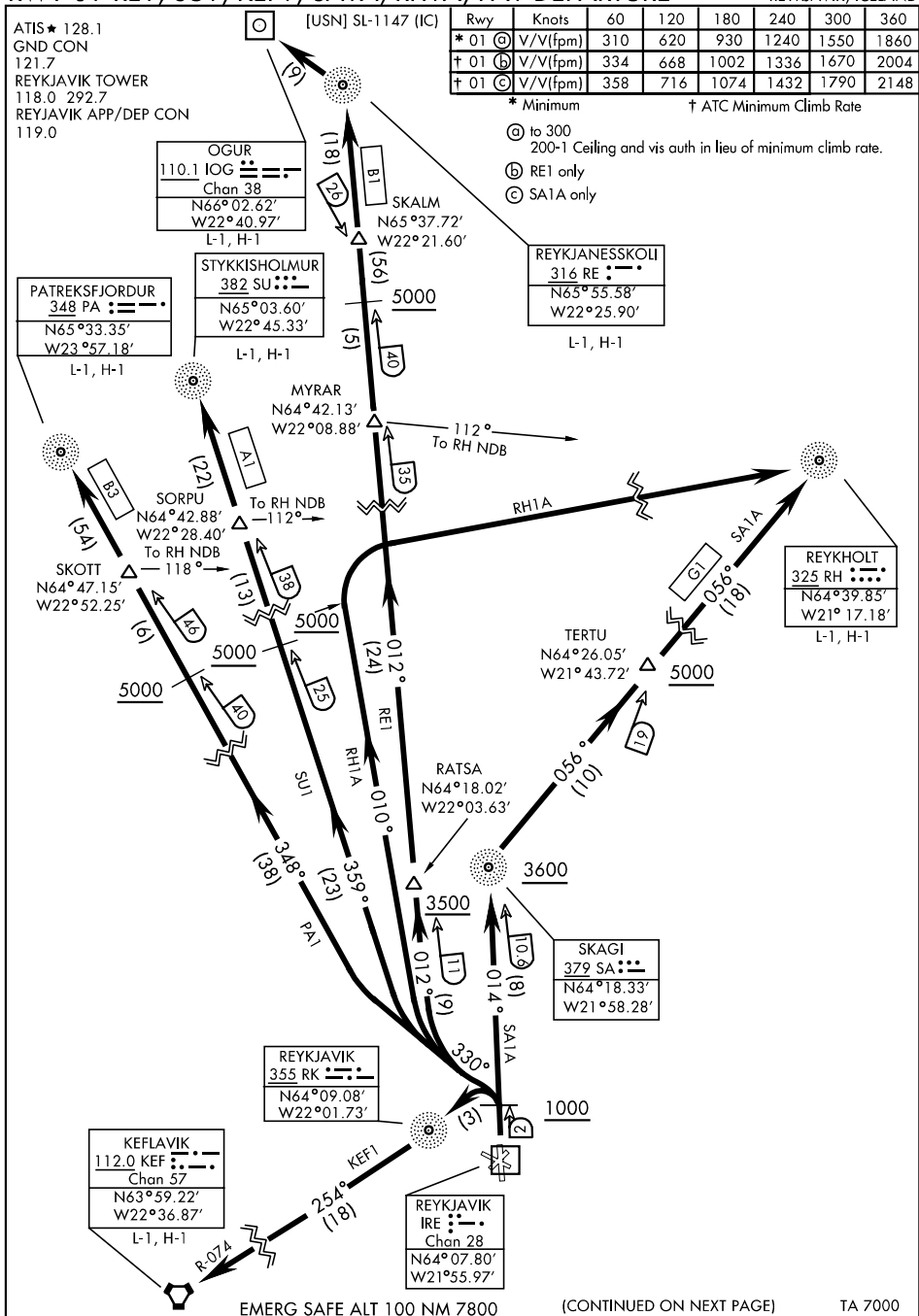
Rwy	Knots	60	120	180	240	300	360
* 01 Ⓐ	V/V(fpm)	310	620	930	1240	1550	1860
+ 01 Ⓑ	V/V(fpm)	334	668	1002	1336	1670	2004
+ 01 Ⓒ	V/V(fpm)	358	716	1074	1432	1790	2148

\* Minimum † ATC Minimum Climb Rate

(a) to 300  
200-1 Ceiling and vis auth in lieu of minimum climb rate.

(b) RE1 only

(c) SA1A only



RWY 01-RE1, SU1, KEF1, SA1A, RH1A, PA1 DEPARTURE

REYKJAVIK, ICELAND  
REYKJAVIK (BIRK)

Effective 3 AUG 2006 - 31 AUG 2006