

RODOS, GREECE

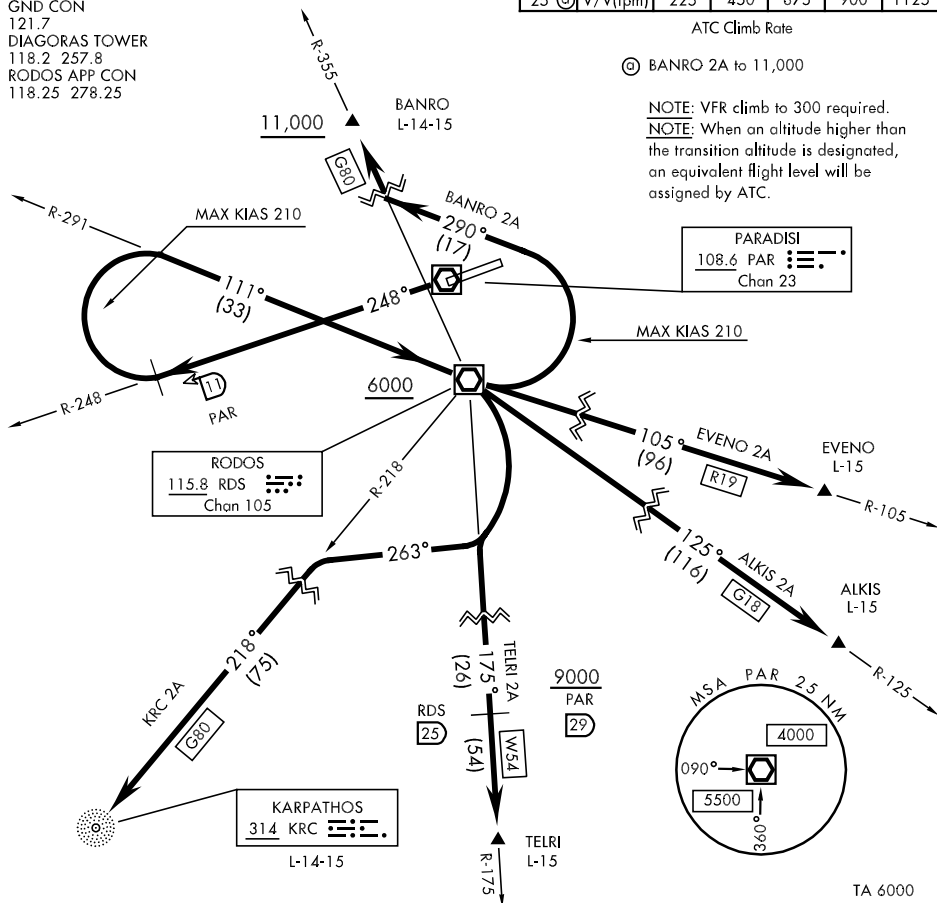
[USN] SL-2741 (GR)

| | | | | | | |
|------|----------|-----|-----|-----|-----|------|
| Rwy | Knots | 60 | 120 | 180 | 240 | 300 |
| 25 @ | V/V(fpm) | 225 | 450 | 675 | 900 | 1125 |

ATC Climb Rate

④ BANRO 2A to 11,000

NOTE: VFR climb to 300 required.
NOTE: When an altitude higher than the transition altitude is designated, an equivalent flight level will be assigned by ATC.



T

TAKE-OFF RWY 25: Climb on PAR VOR/DME R-248 to PAR 11 DME then turn right (MAX KIAS 210) intercept and fly RDS VOR/DME R-291 to RDS. Cross RDS at or above 6000 thence ...

ALKIS 2A: Fly RDS R-125 to ALKIS.

BANRO 2A: Turn left (MAX KIAS 210) heading 290° intercept RDS R-335 to BANRO. Cross BANRO at or above 11,000.

EVENO 2A: Fly RDS R-105 to EVENO.

KRC 2A: Turn right fly heading 263° to intercept RDS R-218 to KRC NDB.

TELRI 2A: Turn right intercept RDS R-175 to TELRI. Cross RDS 25 DME at or above 9000.

RODOS, GREECE
DIAGORAS (LGRP)