

LOC TR  
**111.1**  
Chan **48**

APCH CRS  
**280°**

Rwy Idg  
TDZE  
Arpt Elev  
**8865**  
**77**  
**82**

[USN] AL-2696 (DA)

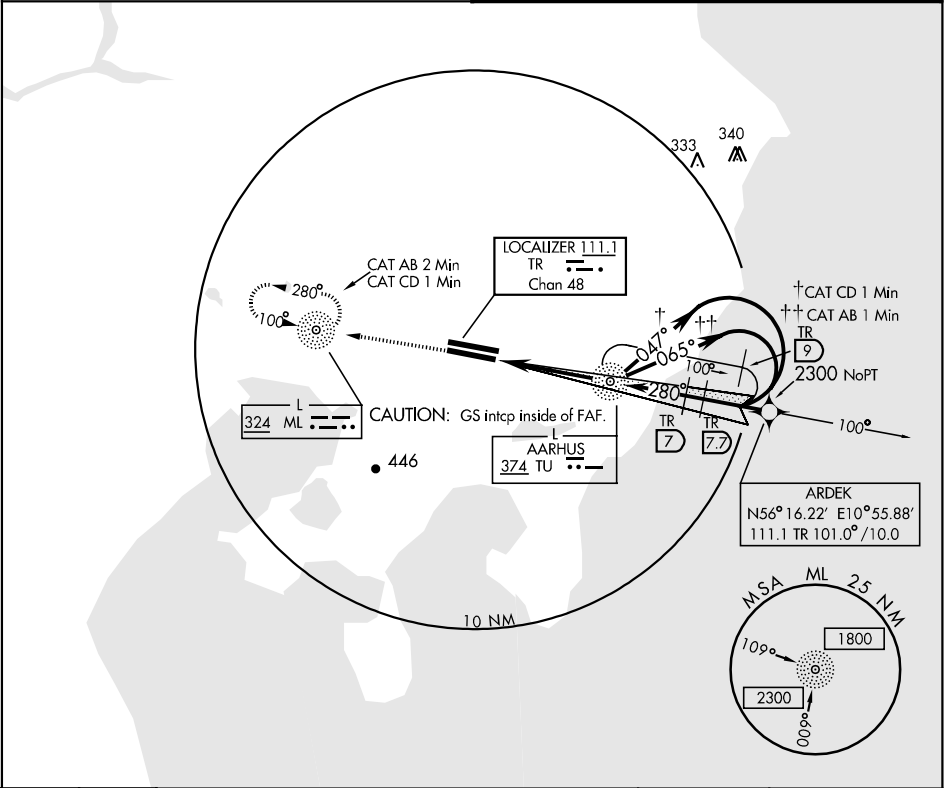
AARHUS (EKAH)

⚠ \*When ALS inop, increase vis (ILS) 800m; (LOC) CAT ABD 800m, CAT C 400m.  
\*\* Circling not authorized S of Rwy 10R-28L. Circling not authorized at night Rwy 10L-28R.

MISSED APPROACH: Climb to 2300 to L ML and hold.

AARHUS APP CON  
**119.275**

AARHUS TOWER ★  
**118.525**



2300 ML

↑

L TU

TA 3000

ARDEK

CAT AB 065° 1 Min

CAT CD 047° 1 Min

1442

2300

2000

LOC 600

GS 2.7°

TCH 36

6 NM

TR DME

1

ELEV 82

10L 10R

8865 x 148

9111 x 75

TDZE 77

280° 6.9 NM from FAF

CATEGORY	A	B	C	D
S-ILS 28L *	277-800m	200	(200-800m)	
S-LOC 28L *	440-800m	363 (400-800m)	440-1200m	363 (400-1200m)
CIRCLING **	560-1600m	580-1600m	820-3200m	820-3600m

TDZL/CL Rwy 28L

HRL Rwy 10R-28L

URL Rwy 10L-28R