

## DAROS DEPARTURE

SHL-2453 [USN]

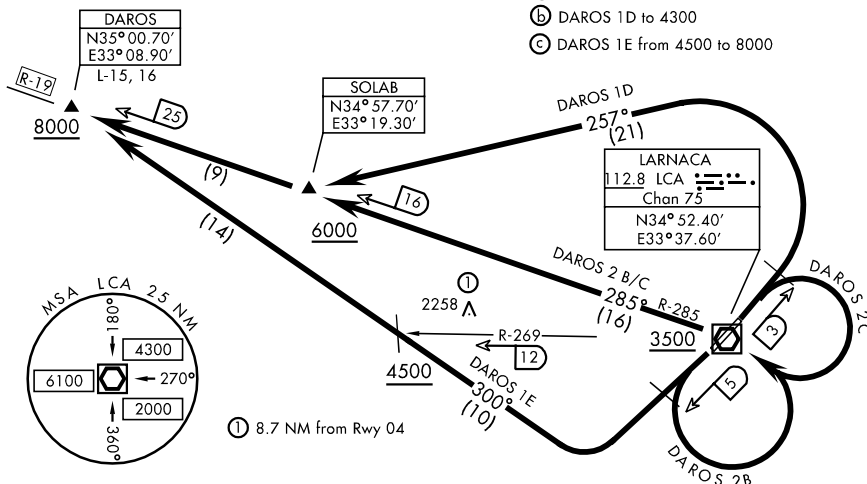
LARNACA, CYPRUS

ATIS 112.8  
LARNACA TOWER  
119.4  
LARNACA APP CON  
121.2

Rwy	Knots	60	120	180	240	300	360
*22 (C)	V/V(fpm)	365	730	1095	1460	1825	2190
*04 (b)	V/V(fpm)	290	580	870	1160	1450	1740
†22 (C)	V/V(fpm)	250	500	750	1000	1250	1500

\* Minimum † ATC Climb Rate

- Ⓐ DAROS 1E to 4500  
Ⓑ DAROS 1D to 4300  
Ⓒ DAROS 1E from 4500 to 8000



TA 8000



## DEPARTURE ROUTE DESCRIPTION

TAKE-OFF RWY 04:

DAROS 2C: (To R19) Climbing right turn direct LCA VOR. Cross LCA VOR at or above 3500. Fly LCA R-285 to SOLAB (LCA R-285/16 DME). Cross SOLAB at or above 6000, then direct DAROS (LCA R-285/25 DME). Cross DAROS at or above 8000. (ATC ASSIGNED CLIMB)

DAROS 1D: (To R-19) Fly rwy heading, at LCA 3 DME, turn left onto track 257° to SOLAB (LCA R-285/16 DME). Cross SOLAB at or above 6000. Fly LCA R-285 to DAROS, cross DAROS at or above 8000. (ATC ASSIGNED CLIMB) Max 210 KIAS or remain within 6 DME during turn.

TAKE-OFF RWY 22:

DAROS 2B: (To R19) Climbing left turn direct LCA VOR. Cross LCA VOR at or above 3500. Fly LCA R-285 TO SOLAB (LCA R-285/16 DME). Cross SOLAB at or above 6000, then direct DAROS (LCA R-285/25 DME). Cross DAROS at or above 8000. (ATC ASSIGNED CLIMB).

DAROS 1E: (To R19) Fly rwy heading, at LCA 5 DME turn right onto track 300° to DAROS (LCA R-285/25 DME), cross DAROS at or above 8000. (ATC ASSIGNED CLIMB).

## DAROS DEPARTURE

LARNACA, CYPRUS  
LARNACA (LCLK)

Effective 3 AUG 2006 - 31 AUG 2006