

FS 08B-FS 26B DEPARTURE

FLORENNES

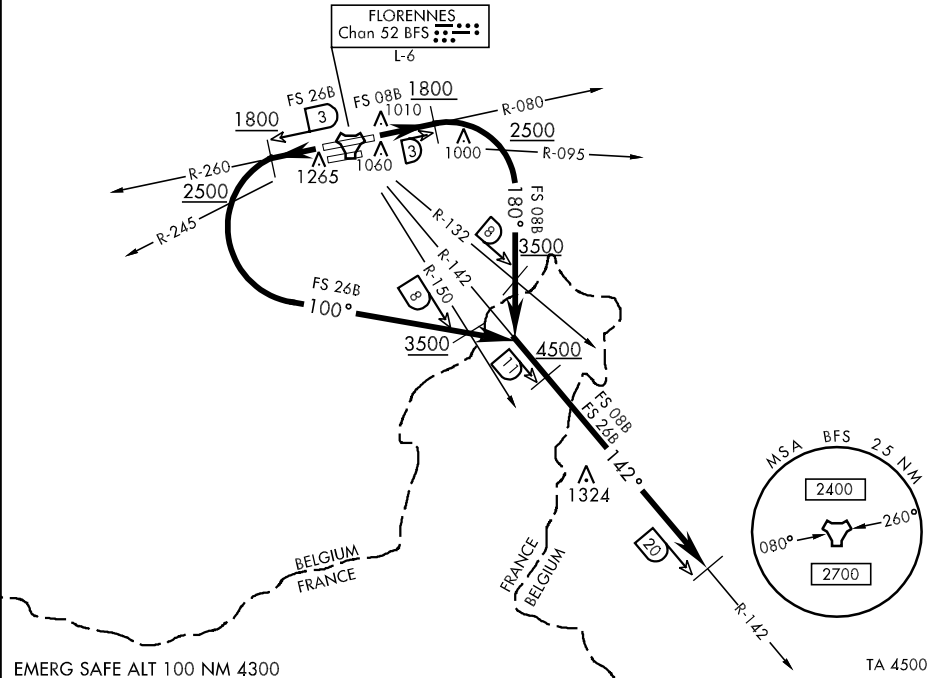
FLORENNES, BELGIUM

[USAF] SL-2462 (BAF)

Rwy	Knots	60	120	180	240	300
08L	V/V(fpm)	380	760	1140	1520	1900
26R	V/V(fpm)	440	880	1320	1760	2200

ATC Climb Rate DER to 1800

GND CON
308.775
FLORENNES TOWER ★
122.1 234.8
FLORENNES APP CON
122.5 372.275



EMERG SAFE ALT 100 NM 4300

TA 4500

DEPARTURE ROUTE DESCRIPTION

TAKE-OFF RWY 08L (FS 08B): Climb straight ahead and contact Florennes APP CON. Cross BFS TACAN 3 DME at or above 1800 AMSL. Turn right on track 180°. Cross BFS R-095 at or above 2500 AMSL. Cross BFS R-132/8 DME at or above 3500 AMSL. Intercept BFS R-142 outbound. Cross BFS R-142/11 DME at or above 4500 AMSL. When passing 4500 AMSL, contact BELGA RADAR, climb as directed. SID terminated at BFS R-142/20 DME.

TAKE-OFF RWY 26R (FS 26B): Climb straight ahead and contact Florennes APP CON. Cross BFS TACAN 3 DME at or above 1800 AMSL. Turn left on track 100°. Cross BFS R-245 at or above 2500 AMSL. Cross BFS R-150/8 DME at or above 3500 AMSL. Intercept BFS R-142 outbound. Cross BFS R-142/11 DME at or above 4500 AMSL. When passing 4500 AMSL, contact BELGA RADAR, climb as directed. SID terminated at BFS R-142/20 DME.

FS 08B-FS 26B DEPARTURE

FLORENNES, BELGIUM
FLORENNES

Effective 3 AUG 2006 - 31 AUG 2006