

VOR/DME GRZ 116.2 Chan 109	APCH CRS 348°	Rwy Idg 9842 THRE 1089 Arpt Elev 1115
--	-------------------------	--

[USA] AL-2556 (AU)

GRAZ (LOWG)

T * Circling W of Rwy 17-35 not authorized.



MISSED APPROACH: Climb to 1800 then turn right to GBG NDB continue climb to 3500. Turn right not later than GRZ 3.0 DME. Missed Approach turn limited to 185 KIAS maximum.

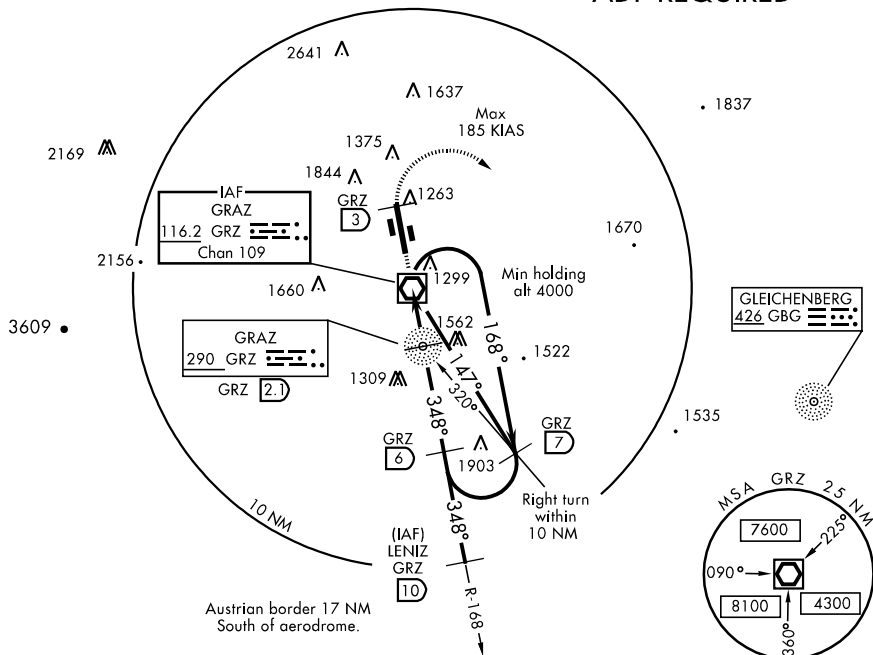
ATIS ★
126.125

GRAZ RADAR (APP)

119.3

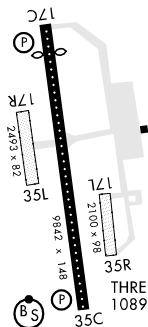
GRAZ TOWER ★
118.2

ADF REQUIRED



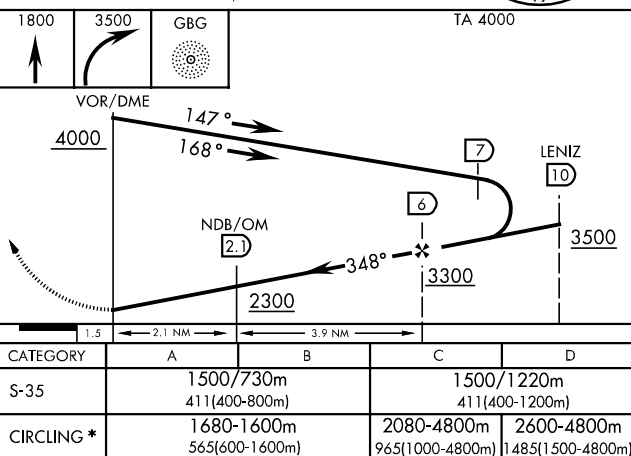
ELEV 1115

Rwy 17C Idg 8989



HIRL Rwy 17C-35C
REIL Rwy 35C

348°7.5 NM
from FAF



GRAZ, AUSTRIA

46°59'N-15°26'E

GRAZ (LOWG)

Orig 04302

VOR/DME RWY 35

Effective 3 AUG 2006 - 31 AUG 2006