

Orig 06187

FAIRFORD 1 DEPARTURE

SHL-3394 [USAF]

FAIRFORD (EGVA)

FAIRFORD, ENGLAND

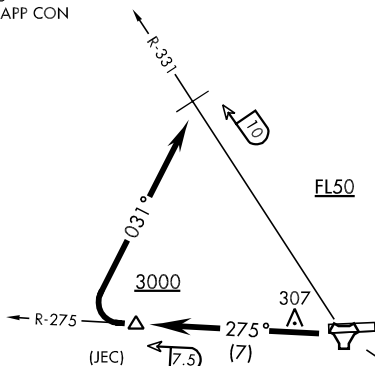
GND CON
234.25
FAIRFORD TOWER ★
119.15 338.225
BRIZE NORTON APP CON
127.25 297.8

Rwy	Knots	60	120	180	240	300	360
27	V/V(fpm)	390	780	1170	1560	1950	2340

ATC Climb Rate to 3000

Strict compliance with the route description is required to avoid noise sensitive areas.

Expeditious climb to 2000' required for noise abatement.

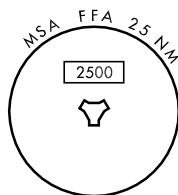


FAIRFORD
Chan 81 FFA
N51°40.92' W01°47.86'

RADAR REQUIRED

EMERG SAFE ALT 100 NM 4100

TA 3000



DEPARTURE ROUTE DESCRIPTION

TAKE-OFF RWY 27: Out FFA TACAN R-275 to 7.5 DME (JEC) climbing to at or above 3000 or as directed by ATC. Completion of SID to 7.5 DME is mandatory for noise abatement unless directed otherwise by ATC for collision avoidance vectors. At JEC turn right to track 031° direct to FFA R-331/10 DME, climbing to FL50 or as directed by ATC.

FAIRFORD 1 DEPARTURE

FAIRFORD, ENGLAND

FAIRFORD (EGVA)

Effective 3 AUG 2006 - 31 AUG 2006