

VOR or NDB

DALAMAN (LTBS)

MISSED APPROACH: Climb to 2400 on 008° from VOR/DME/NDB then turn left climbing to 4500 proceed to VOR/DME/NDB and hold. Max 185 KIAS until inbound.

3074 1135 2133 2919 7165

1840 1968 2051 1105 410 328 1723 2051 3542 2054 820 360 1200 1824 1401 165 175 1010 150 165 175 190

Min holding alt 4500
Max holding 230 KIAS

IAF DALAMAN
114.7 DAL
Chan 94
346

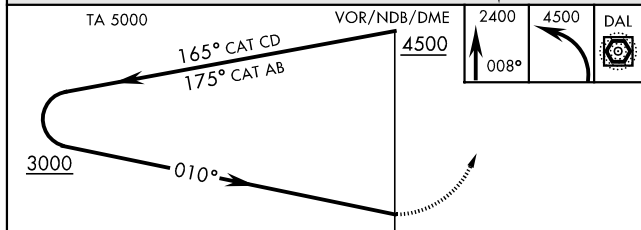
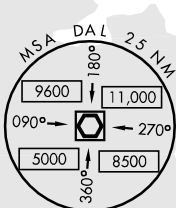
10 NM

Execute base turn
MAX 220 KIAS

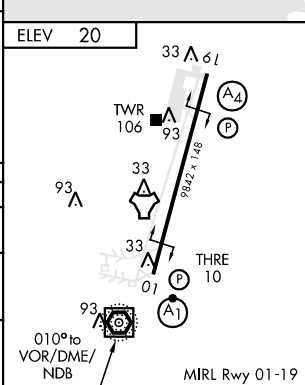
CAUTION: Final approach course does not pass through any portion of the landing surface.

CAUTION: Final approach course is 722' left of rwy centerline at MAP.

MSA DAL 25 NM
081
9600 11,000
090° 270°



CATEGORY	A	B	C	D
S-VOR/NDB	NOT AUTHORIZED			
VOR/ CIRCLING *	1600-2000m 1580 (1600-2000m)	1600-2400m 1580 (1600-2400m)	1600-4800m 1580 (1600-4800m)	2320-4800m 2300 (2300-4800m)
NDB/ CIRCLING *	1840-4800m 1820 (1900-4800m)			2320-4800m 2300 (2300-4800m)



DALAMAN (LTBS)

VOR or NDB

Effective 3 AUG 2006 - 31 AUG 2006