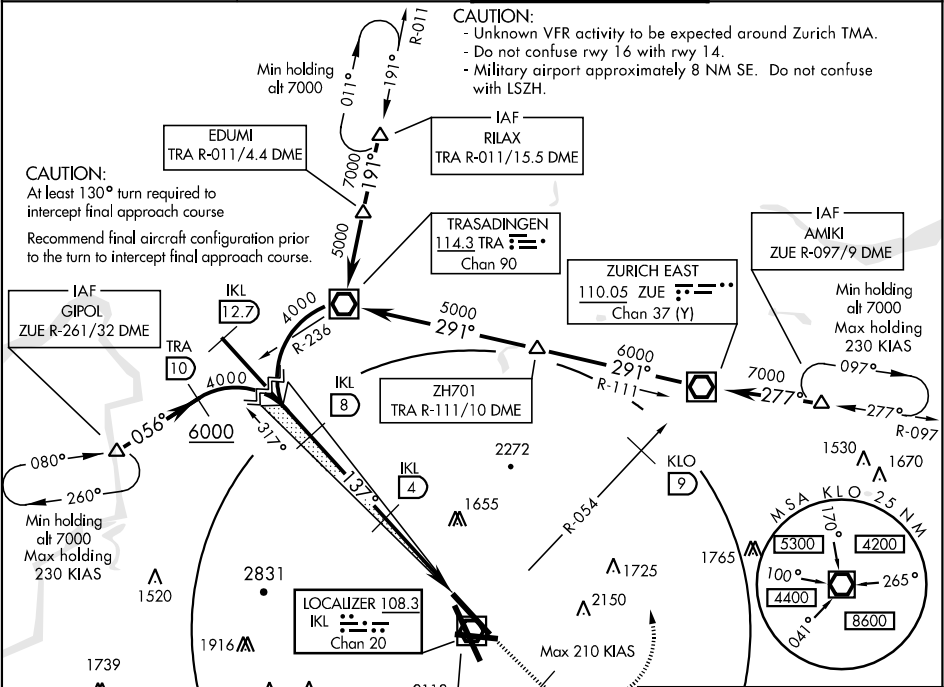


ZURICH, SWITZERLAND

ILS RWY 14

LOC/DME IKL 108.3 Chan 20	APCH CRS 137°	Rwy ldg 10,337 THRE 1402 Arpt Elev 1416	[USAF] AL-2098 (SZ)	ZURICH (LSZH)
MISSED APPROACH: Climb on track 137° to 5000. At IKL 4.5 DME past the station turn left (Max 210 KIAS). Track 360° to intcp KLO R-054. At KLO 9 DME past the station climb to 7000. Proceed to ZUE. Cross ZUE at 6000 or above. At ZUE intcp ZUE R-097. Proceed to AMIKI				
* When ALS inop, increase RVR to 1220m, vis to 1200m.				
ATIS 128.525	APP CON 118.0 120.75	TOWER 118.1	GND CON 121.9	



VOR/DME REQUIRED

IKL 8	TA 7000	5000	IKL 4.5	tr 137°	tr 360°
4000	IKL 4	2730 (1328)	IKL DME		
GS 3.00°	HAT calculated from thld.				
TCH 53	IKL DME reads zero at thld.				
	4 NM	4 NM			
CATEGORY	A	B	C	D	
S-ILS 14*	1602/730m	200	(200-800m)		
S-LOC 14	NOT AUTHORIZED				
CIRCLING	NOT AUTHORIZED				

