

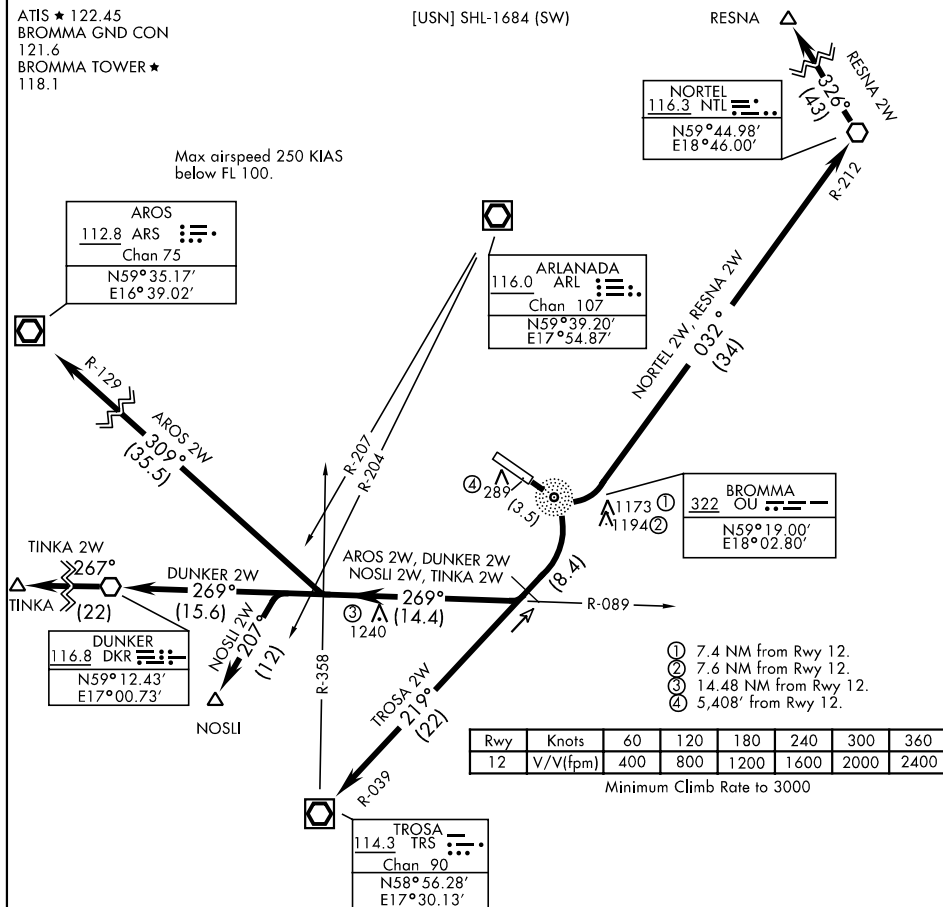
## WHISKEY TWO RWY 12 DEPARTURE

BROMMA (ESSB)  
STOCKHOLM, SWEDEN

ATIS ★ 122.45  
BROMMA GND CON  
121.6  
BROMMA TOWER ★  
118.1

[USN] SHL-1684 (SW)

Max airspeed 250 KIAS  
below FL 100.



## DEPARTURE ROUTE DESCRIPTION

TAKE-OFF RWY 12: Climb to 3000. Climb straight ahead to OU NDB thence...

AROS TWO WHISKEY DEPARTURE (ARS 2W): Turn right to intercept TRS R-039 and proceed to TRS 22 DME. Turn right to intercept DKR R-089 and proceed to TRS R-358. Turn right to intercept ARS R-129 and proceed to ARS.

DUNKER TWO WHISKEY DEPARTURE (DKR 2W): Turn right to intercept TRS R-039 and proceed to TRS 22 DME. Turn right to intercept DKR R-089 and proceed to DKR.

NORTEL TWO WHISKEY DEPARTURE (NTL 2W): Turn left to intercept NTL R-212 and proceed to NTL.

(Continued on next page)

WHISKEY TWO RWY 12 DEPARTURE

STOCKHOLM, SWEDEN  
BROMMA (ESSB)

Effective 3 AUG 2006 - 31 AUG 2006