

OSLO, NORWAY

ILS RWY 19R

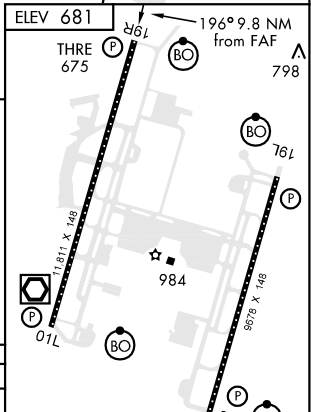
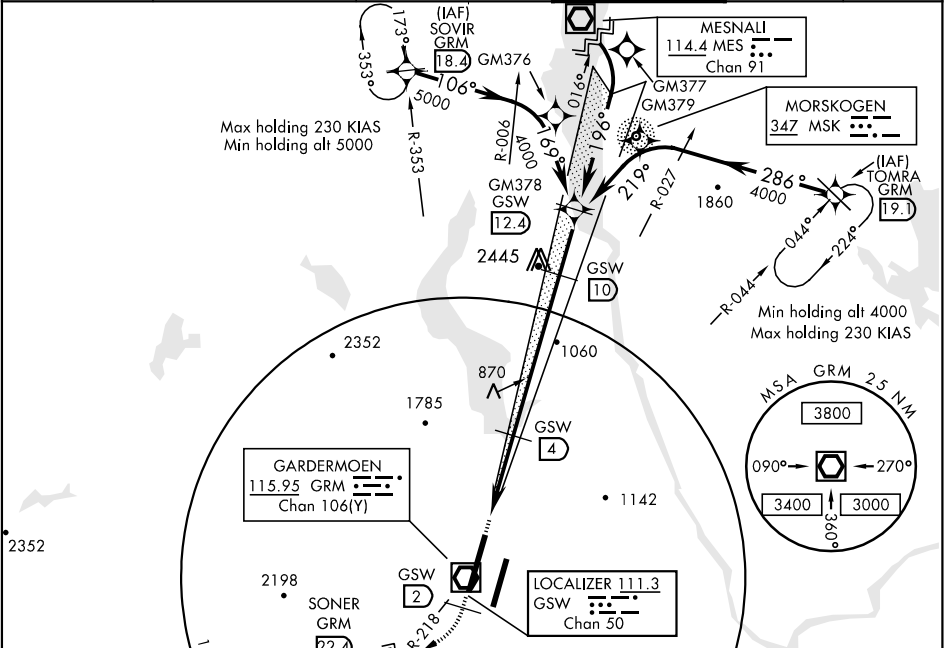
LOC/DME GSW 111.3 Chan 50	APCH CRS 196°	Rwy Idg THRE 675 Arpt Elev 681
---	-------------------------	--

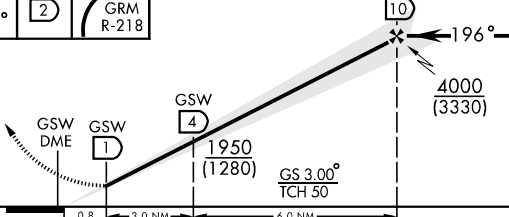
[USAF] AL-1857 (NO)

GARDERMOEN (ENGM)

⚠ When ALS inop, increase vis to 1200m. ** When ALS inop, increase CAT ABC vis to 1600m, CAT D vis to 2000m. *** Circling not authorized E of Rwy 01L-19R.	(BO)	MISSED APPROACH: Climb on Rwy track 196° to GSW 2 DME or 1500, whichever is later. Then right climbing turn to intercept and proceed on GRM R-218 to SONER. Enter holding at 4000.
---	-------------	--

ATIS ARR DEP 126.125 127.15	GARDERMOEN APP CON 119.975 120.45 EAST WEST	GARDERMOEN DIRECTOR 131.35	GARDERMOEN TOWER 118.3 339.875	GND CON 369.325	CLNC DEL 121.60
--	---	--------------------------------------	--	---------------------------	---------------------------



1500	GSW	4000		
↑ Tr 196°	②	GRM R-218		
				
CATEGORY	A	B	C	D
S-ILS 19R *	875-800m 200 (200-800m)			
S-LOC 19R **	1020-800m 345 (400-800m)		1020-1200m 345 (400-1200m)	
CIRCLING ***	1100-1600m 419 (500-1600m)	1200-1600m 519 (600-1600m)	2040-4800m 1359 (1400-4800m)	2260-4800m 1579 (1600-4800m)

TDZL/CL Rwy 01R and 19R					
HIRL all Rwy					
FAF to MAP 9.0 NM					
Knots	60	90	120	150	180
Min:Sec	9:00	6:00	4:30	3:36	3:00

OSLO, NORWAY
Amdt 1 06019

60°12'N-11°06'E

GARDERMOEN (ENGM)

ILS RWY 19R

Effective 3 AUG 2006 - 31 AUG 2006