

VALLETTA, MALTA

# VOR/NDB/DME RWY 14

VOR/DME GZO <b>115.7</b> Chan <b>104</b>	APCH CRS <b>135°</b>	Rwy Idg <b>11,627</b> THRE <b>256</b> Arpt Elev <b>300</b>
--	-------------------------	--

[USN] AL-1683 (MT)

LUQA (LMML)

✴ When ALS inop, increase vis CAT AB to 1600m, CAT C to 2800m, CAT D to 3200m.

ALSF-1

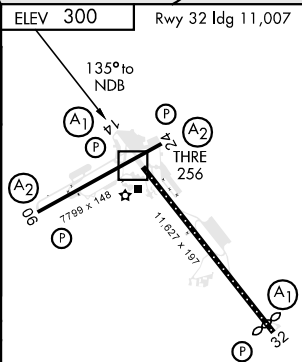
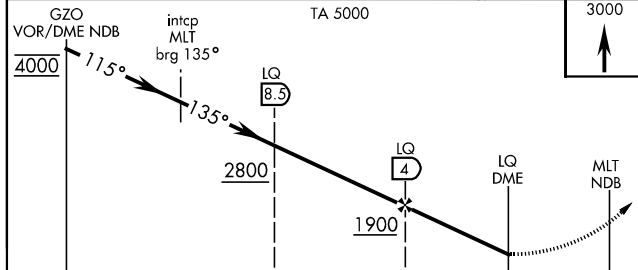
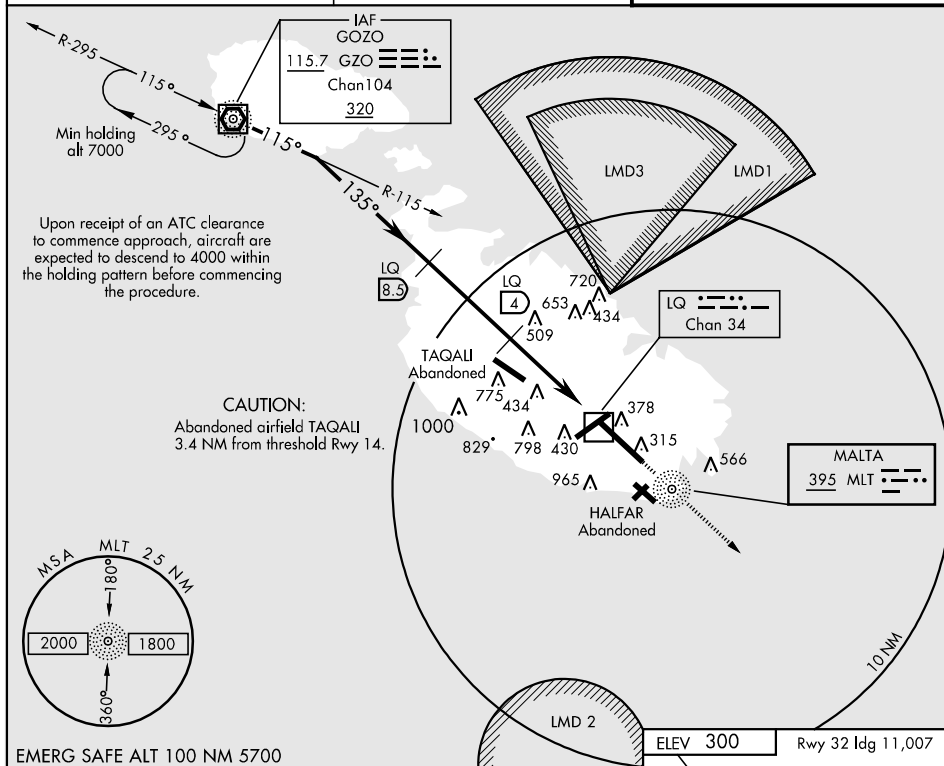


MISSED APPROACH: Climb straight ahead to 3000 and continue as directed by ATC. In case of radio communications failure, continue until LQ 10 DME, turn right to GZO VOR.

ATIS  
**127.4**

LUQA APP CON  
**128.15 284.5**

LUQA TOWER  
**135.1 284.5**



CATEGORY	A	B	C	D
S-14 *	920-800m 664 (700-800m)	920-2000m 664(700-2000m)	920-2400m 664(700-2400m)	
CIRCLING	920-1600m 620(700-1600m)	1100-2000m 800(800-2000m)	1400-4800m 1100(1100-4800m)	

HIRL all Rwy's					
FAF to MAP 4.0 NM					
Knots	60	90	120	150	180
Min:Sec	4:00	2:40	2:00	1:36	1:20

VALLETTA, MALTA  
06075

35°82'N-14°29'E

LUQA (LMML)

# VOR/NDB/DME RWY 14

Effective 3 AUG 2006 - 31 AUG 2006