

SID RWY 14 DOLON 5B, ORSOM 6B, ROBOT 5B, TROTA 6B

BRINDISI, ITALY

BRINDISI GND CON  
313.55  
BRINDISI TOWER  
118.1 386.875  
BRINDISI DEP CON  
121.0 376.8

[USAF] SL-1699 (IT)

TROTA
N41° 03.50'
E18° 03.90'

L-12

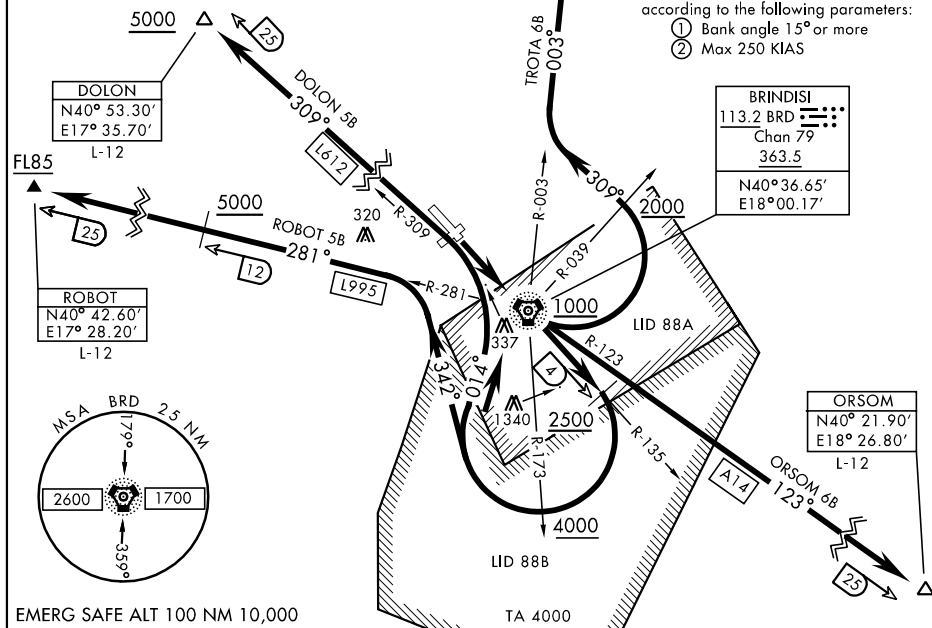
FL65

### Minimum Climb Rate to 5000

Rwy	Knots	60	120	180	240	300	360
14	V/V(fpm)	330	660	990	1320	1650	1980

Turns after take-off shall be executed according to the following parameters:

- ① Bank angle  $15^\circ$  or more
- ② Max 250 KIAS



## DEPARTURE ROUTE DESCRIPTION

TAKE-OFF RWY 14: Proceed to BRD VORTAC-NDB and cross at or above 1000. Then . . .

DOLON 5B: Continue outbound on R-135. Cross BRD 4 DME at or above 2500. Turn right on track 014°. Cross BRD R-173 at or above 4000. Intercept BRD R-309 outbound. Proceed to DOLON. Cross DOLON at or above 5000.

ORSOM 6B: Continue outbound on track R-123 to ORSOM. Cross ORSOM as cleared.

**ROBOT 5B:** Continue on track R-135 outbound. Cross BRD 4 DME at or above 2500. Turn right to cross BRD R-173 at or above 4000. Proceed on track 342° to intercept BRD R-281 outbound. Cross 12 DME at or above 5000. Proceed to ROBOT. Cross ROBOT at or above FL85.

TROTA 6B: Turn left to track 309°. Cross BRD R-039 at or above 2000. Intercept R-003 outbound. Cross R-003/14 at or above 5000. Proceed to TROTA. Cross TROTA at or above FL65.

SID RWY 14 DOLON 5B, ORSOM 6B, ROBOT 5B, TROTA 6B

BRINDISI, ITALY  
CASALE (LIBR)

Effective 3 AUG 2006 - 31 AUG 2006