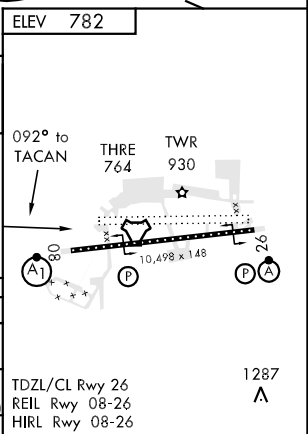


TACAN RWY 09

\*\*\* Circling not authorized S of Rwy 27

## RADAR REQUIRED

EMERG SAFE ALT 100 NM 7200



		← 6 NM →		0.7	
CATEGORY	A	B	C	D	E
S-09 *	1540/1600m 776 (800-1600m)		1540-2800m 776 (800-2800m)	1540-3200m 776 (800-3200m)	1540-3600m 776 (800-3600m)
CIRCLING ***	1690-2000m 908 (1000-2000m)	1710-2000m 928 (1000-2000m)	2020-4800m 1238 (1300-4800m)	2260-4800m 1478 (1500-4800m)	2620-4800m 1838 (1900-4800m)
S-PAR 09 **	1019/730m	250	(300-800m)	GS 3.00°	

RAMSTEIN AB (ETAR)

TACAN RWY 09

Effective 3 AUG 2006 - 31 AUG 2006