


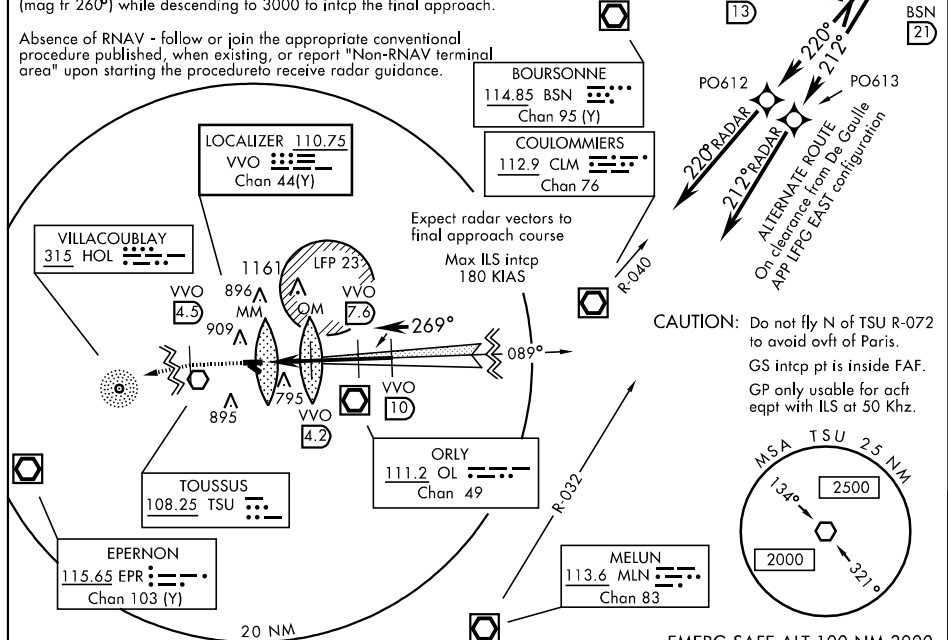
ILS RWY 27
(RNAV-SOLBA-[VELER]-RADAR)

LOC VVO 110.75 Chan 44 (Y)	APCH CRS 269°	Rwy Idg 5948 TDZE 580 Arpt Elev 584	(RNAV-SOLBA-[VELER]-RADAR) [USN] AL-2564 (FR) VELIZY (LFPV)	
<p>▼ *When ALS inop, increase vis 400m. ***When ALS inop, increase vis CAT C 400m. ***Circling not authorized S of Rwy 09-27.</p>			ALSF-2 	MISSED APPROACH: Climb on hdg to 3000 (2424). At VVO 4.5 DME turn left to intercept and follow HOL NDB 079° (mag tr 259°) to HOL, then return to EPR and follow clnc from ctl. Climb to 1400 (824) before accelerating in level flight.
ONLY APP CON 118.85	VILLA APP CON 119.425 233.675		VILLA TOWER★ 122.1 374.775	GND CON 121.875

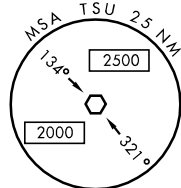
VOR/DME REQUIRED	RADAR REQUIRED
------------------	----------------

LOST COMM: Veler-Solba RWY 27 (on cnc) Squawk 7600, execute the published procedure and continue on MLN VOR/DME R-032 (mag tr 212°). At MLN 24.7 DME, right mag tr 276°, then descend to 4000. At CLM 10.7 DME, left CLM R-260 (mag tr 260°) while descending to 3000 to intcp the final approach.

Absence of RNAV - follow or join the appropriate conventional procedure published, when existing, or report "Non-RNAV terminal area" upon starting the procedure to receive radar guidance.



CAUTION: Do not fly N of TSU R-072
to avoid ovft of Paris.
GS intcp pt is inside FAF.
GP only usable for acft
eqpt with ILS at 50 Khz.



3000 ↑	VVO 4.5	tr 259°	HOL 315	TA 4000	VVO 7.6	VVO 10	3000 (2424)																																
<p>PAPI cannot be used with the ILS.</p>																																							
<table border="1"> <tr> <td>CATEGORY</td> <td colspan="7"></td> </tr> <tr> <td>S-ILS 27 *</td> <td colspan="7">841-1200m 261 (300-1200m)</td> </tr> <tr> <td>S-LOC 27**</td> <td colspan="7">1020-1600m 440 (500-1600m)</td> </tr> <tr> <td>CIRCLING ***</td> <td colspan="4">1220-1600m 636 (700-1600m)</td> <td colspan="3">1320-3200m 736 (800-3200m)</td> </tr> </table>								CATEGORY								S-ILS 27 *	841-1200m 261 (300-1200m)							S-LOC 27**	1020-1600m 440 (500-1600m)							CIRCLING ***	1220-1600m 636 (700-1600m)				1320-3200m 736 (800-3200m)		
CATEGORY																																							
S-ILS 27 *	841-1200m 261 (300-1200m)																																						
S-LOC 27**	1020-1600m 440 (500-1600m)																																						
CIRCLING ***	1220-1600m 636 (700-1600m)				1320-3200m 736 (800-3200m)																																		

VELIZY (LFPV)

ILS RWY 27
(RNAV-SOLBA-[VELER]-RADAR)

Effective 3 AUG 2006 - 31 AUG 2006