

⚠

*When ALS inop, increase CAT AB RVR to 1220, vis to 1200m; CAT CD RVR to 1520, vis to 1600m.

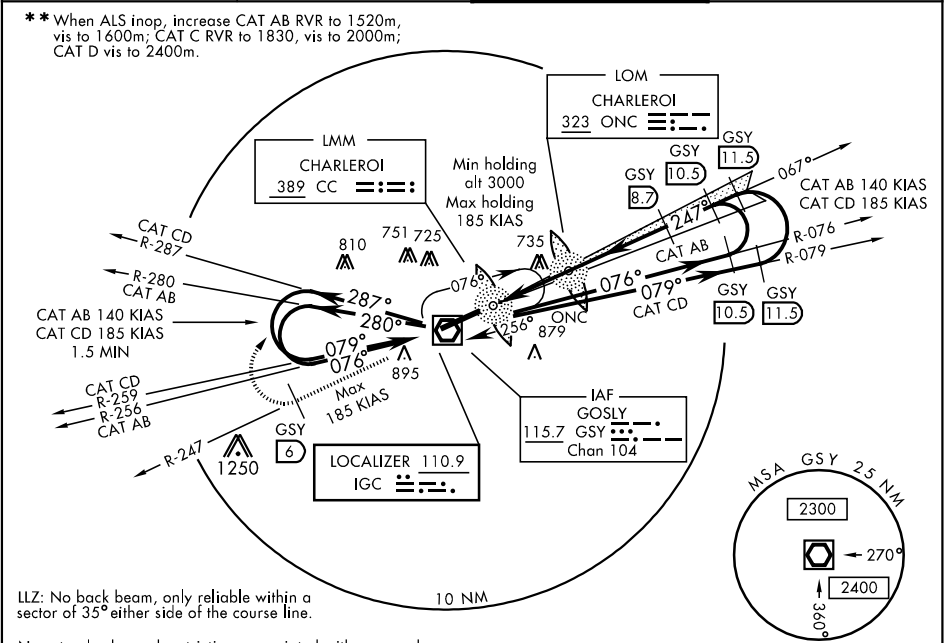
ALSF-1

ⓘ

ⓐ

MISSED APPROACH: Climb to 3000 via GSY R-247 to 6 DME then climbing right turn direct GSY VOR/DME and hold.

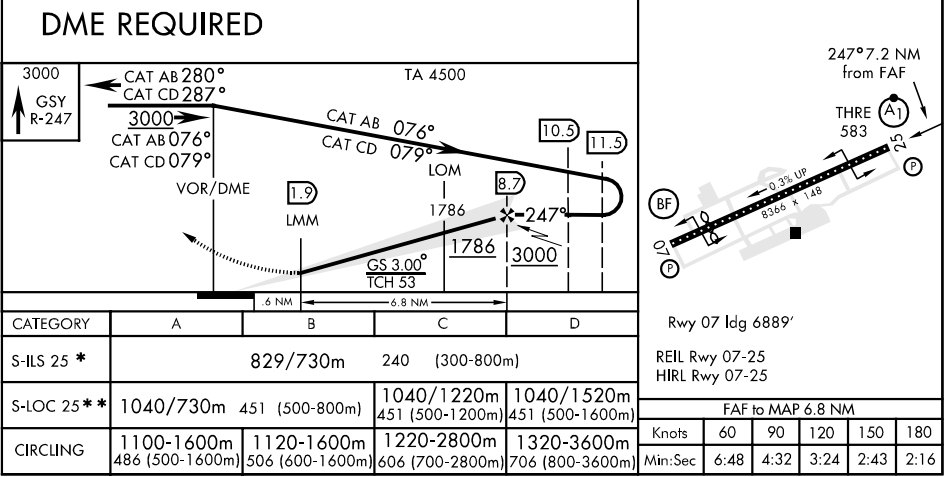
ATIS	CHARLEROI APP CON	CHARLEROI TOWER★	GND CON
115.7	133.125 370.875	121.3 257.8	121.8



LLZ: No back beam, only reliable within a sector of 35° either side of the course line.

Non standard speed restrictions associated with approach.

ELEV 614



Effective 3 AUG 2006 - 31 AUG 2006