

KOK 2C, 1F, 1H, 4L DEPARTURE

[USAF] SHL-1673 (BE)

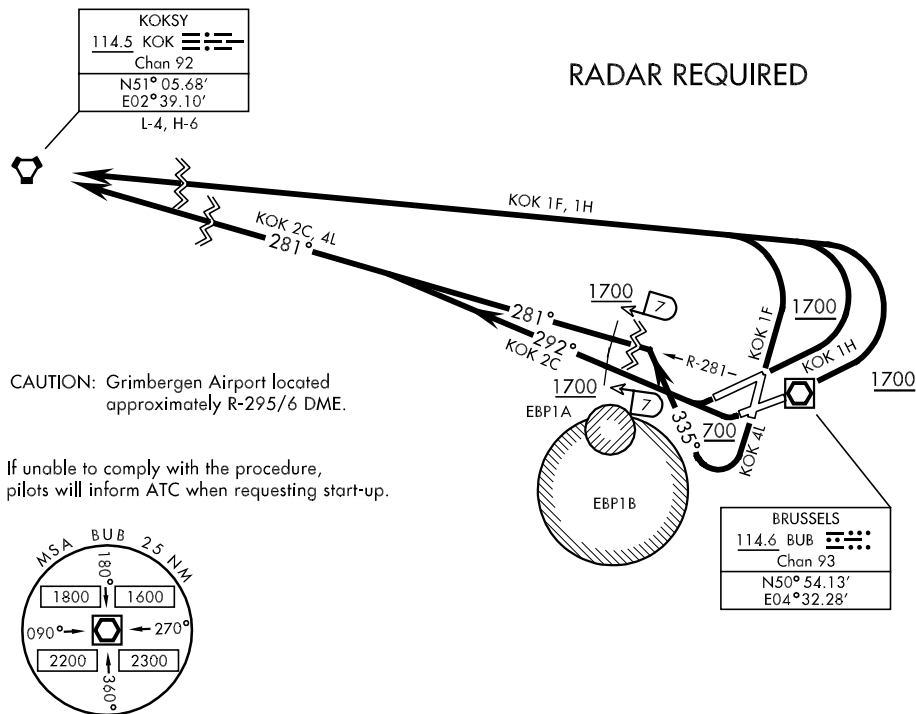
BRUSSELS, BELGIUM

ATIS 121.75
CLNC DEL
121.95
GND CON
121.875
BRUSSELS TOWER
118.6 388.525
BRUSSELS DEP
126.625

Rwy	Knots	60	120	180	240	300	360
02-07L/R 20-25L/R	V/V(fpm)	430	860	1280	1710	2130	2560

Minimum Climb Rate to 3200

RADAR REQUIRED



DEPARTURE ROUTE DESCRIPTION

NOTE: Establish two-way communication with departure as soon as possible, not later than 4000.

TAKE-OFF RWY 02 (KOK 1F) OR 07L/R (KOK 1H): Climb straight ahead to 1700. Turn left, proceed direct KOK VORTAC. Maintain FL60 or as assigned by ATC.

TAKE-OFF RWY 20 (KOK 4L): As soon as practicable after leaving 700, turn right track 335°, intercept BUB VOR/DME R-281 direct KOK VORTAC, cross BUB 7 DME at or above 1700. Maintain FL60 or as assigned by ATC.

TAKE-OFF RWY 25L/R (KOK 2C): As soon as practicable after leaving 700, turn right track 292°, intercept BUB VOR/DME R-281 direct KOK VORTAC, cross BUB 7 DME at or above 1700. Maintain FL60 or as assigned by ATC.

KOK 2C, 1F, 1H, 4L DEPARTURE

BRUSSELS, BELGIUM
BRUSSELS NATL (EBBR)

Effective 3 AUG 2006 - 31 AUG 2006