

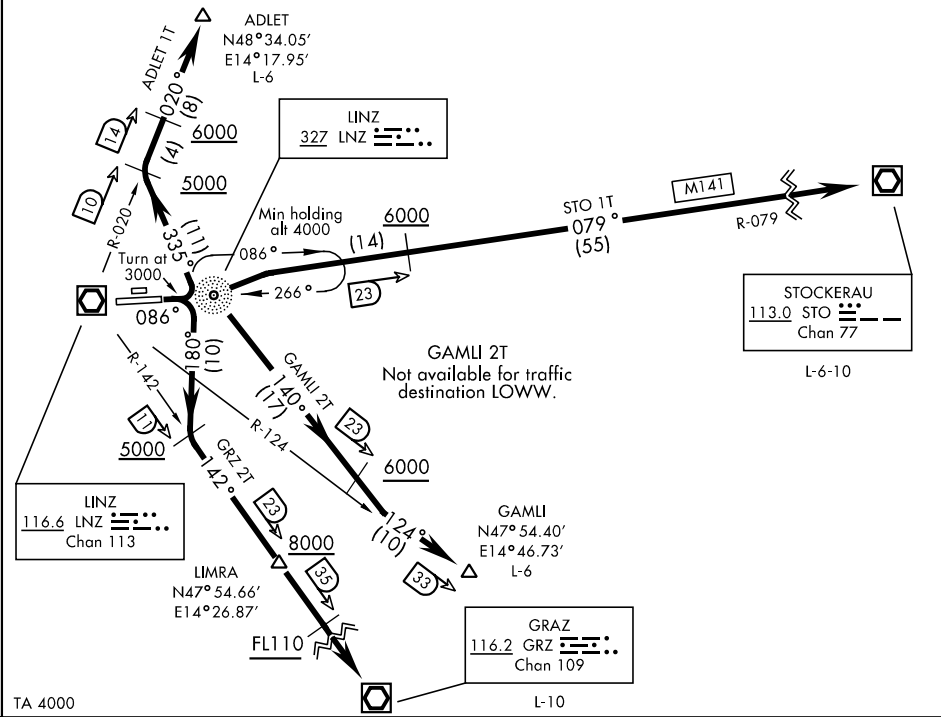
ATIS ★ 128.125
LINZ TOWER ★
118.8
LINZ RADAR (APP)
119.75

[USA] SL-2904 (AU)

Rwy	Knots	60	120	180	240
09 (A)	V/V(fpm)	280	560	840	1120
09 (B)	V/V(fpm)	220	440	660	880

Minimum ATC Climb Rate

- (A) GAMLI 2T, STO 1T to 8000
- (B) GRZ 2T to 8000



DEPARTURE ROUTE DESCRIPTION

TAKE-OFF RWY 09: Track 086° , thence...

Initial clearance limit FL60:

ADLET 1T: When passing 3000 turn left heading 335° to intercept LINZ R-020 inbound to ADLET. Cross LINZ 10 DME at or above 5000. Cross the LINZ 14 DME at or above 6000.

Initial clearance limit FL80:

GAMLI 2T: Until passing LINZ NDB, turn right heading 140° to intercept LINZ VOR/DME R-124 to GAMLI. Cross LINZ 23 DME at or above 6000. Not available for traffic destination LOWW.

GRZ 2T: When passing 3000 turn right heading 180° to intercept LINZ R-142 inbound to GRZ VOR/DME. Cross LINZ 11 DME at or above 5000. Cross LINZ 23 DME at or above 8000. Cross LINZ 35 DME at or above FL110.

GRZ 2T: COMMUNICATION FAILURE PROCEDURE: Squawk 7600 and maintain FL80 until LINZ 20 DME, then climb to FL110. Maintain FL110 for 3 min, then climb to filed flight plan cruising level.

Initial clearance limit FL60:

STO 1T: Turn left at 3000, but not before the LINZ NDB, and intercept the LINZ VOR/DME R-079 inbound to the STO VOR/DME. Cross LINZ 23 DME at or above 6000.