
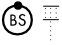


LINZ, AUSTRIA

ILS RWY 27

LOC OEL 109.3 Chan 30	APCH CRS 266°	Rwy Idg THRE Arpt Elev 9350 961 978	[USA] AL-2904 (AU)	LINZ (LOWL/LOXL)
---	-------------------------	---	--------------------	------------------

		MISSED APPROACH: Climb to 3000. Then turn right to LINZ VOR/DME and hold.
ATIS ★ 128.125	LINZ RADAR (APP) 119.75	LINZ TOWER ★ 118.8

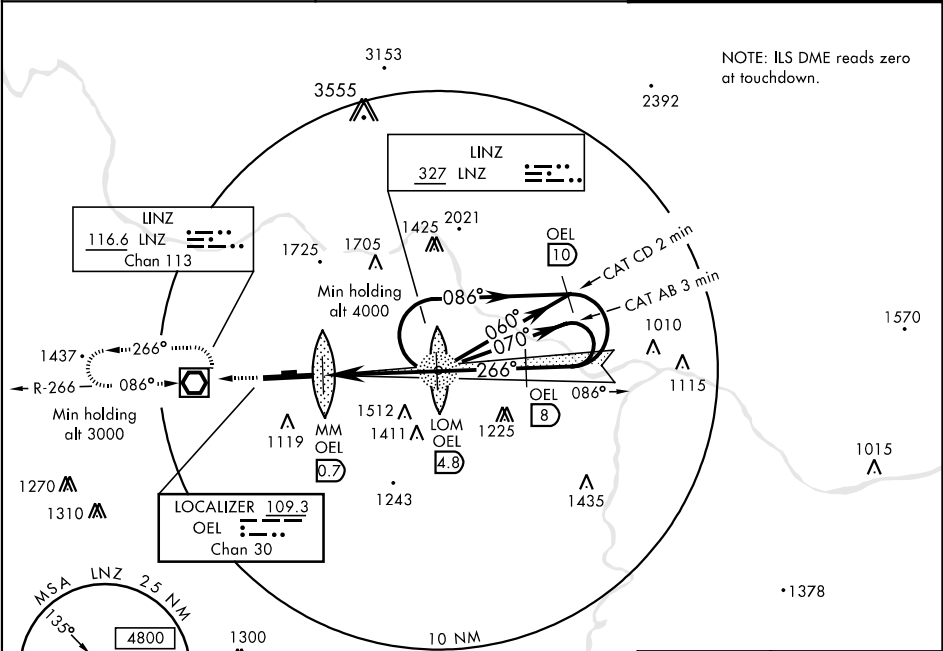


Diagram showing runway layout with taxiway (TA 4000) and various navigation aids (NDB/LOM, CAT CD 060°, CAT AB 070°). Elevation 978 is noted. Distances and angles are marked: 046°, 315°, 086°, 266°, 3500, 2500, 0.5, 4.1 NM, GS 3.00°, TCH 53.

Diagram showing runway layout with taxiway (TA 4000) and various navigation aids (NDB/LOM, CAT CD 060°, CAT AB 070°). Elevation 978 is noted. Distances and angles are marked: 046°, 315°, 086°, 266°, 3500, 2500, 0.5, 4.1 NM, GS 3.00°, TCH 53.

Diagram showing runway layout with taxiway (TA 4000) and various navigation aids (NDB/LOM, CAT CD 060°, CAT AB 070°). Elevation 978 is noted. Distances and angles are marked: 046°, 315°, 086°, 266°, 3500, 2500, 0.5, 4.1 NM, GS 3.00°, TCH 53.

Diagram showing runway layout with taxiway (TA 4000) and various navigation aids (NDB/LOM, CAT CD 060°, CAT AB 070°). Elevation 978 is noted. Distances and angles are marked: 046°, 315°, 086°, 266°, 3500, 2500, 0.5, 4.1 NM, GS 3.00°, TCH 53.

CATEGORY	A	B	C	D
S-ILS 27	1161/730m	200	(200-800m)	
S-LOC 27	1320/730m	359	(400-800m)	1320/1220m 359(400-1200m)
CIRCLING	1560-1600m 582(600-1600m)	1640-1600m 662(700-1600m)	2220-4800m 1242(1300-4800m)	

TDZ/CL Rwy 27 HIRL Rwy 09-27 REIL Rwy 27					
FAF to MAP 4.1 NM					
Knots	60	90	120	150	180
Min:Sec	4:06	2:44	2:03	1:38	1:22

Effective 3 AUG 2006 - 31 AUG 2006